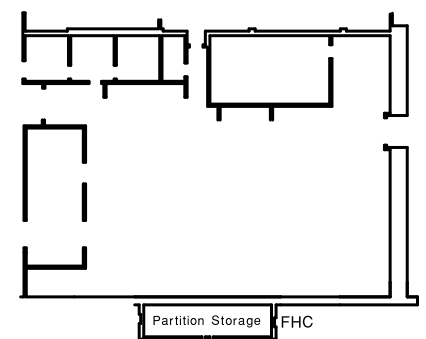


Sacramento Convention Center Exhibit Halls D & E

SCC Exhibit Halls D & E
w/"D/E" Airwall
139 8' x 10' Booths
Big "I" Day Proposed 2017
5/01/17 SCDE82147
FHC Fire Hose Cabinet
Air Wall Door
LIFO Last In, First Out

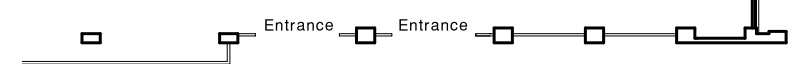
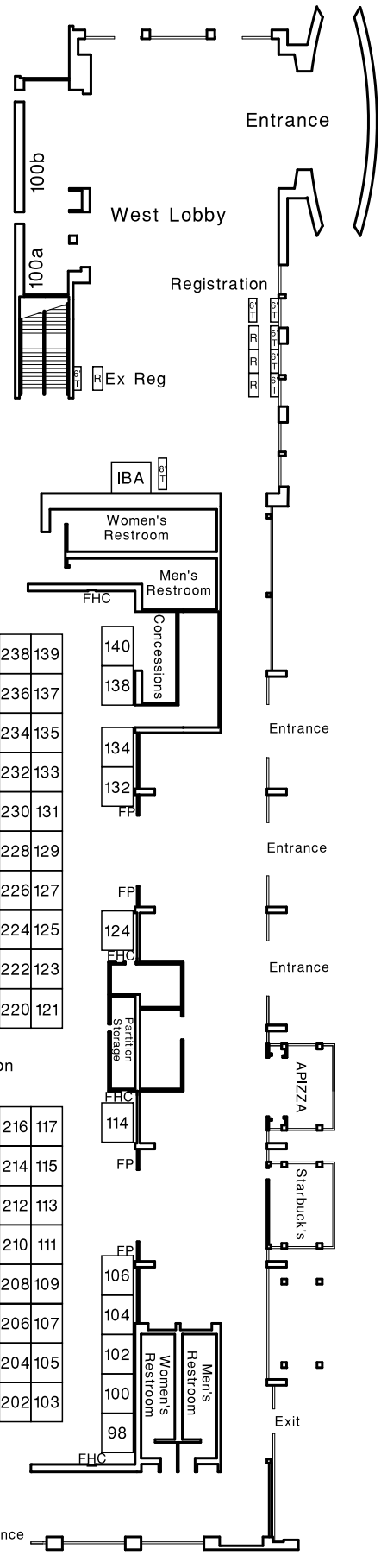
This Floorplan Designed & Prepared by



← To Docks

439	438	339	338	239
LIFO				
437	436	337	336	237
435	434	335	334	235
433	432	333	332	233
431	430	331	330	231
429	428	329	328	229
427	426	327	326	227
425	424	325	324	225
423	422	323	322	223
421	420	321	320	221
419				
417				
415	416	317	316	217
413	414	315	314	215
411	412	313	312	213
409	410	311	310	211
407	408	309	308	209
405	406	307	306	207
403	404	305	304	205
401	402	303	302	203

Afternoon Reception



"J" Street